

Input data

| | | |
|-----------------------|-------|------------|
| System of measurement | | Metric |
| Input type | | Gear motor |
| Input speed | [rpm] | 1400 |
| Output speed | [rpm] | 0.35 |
| Ratio (i=) | | 4000 |
| Frequency | [Hz] | 50 |
| Input options | | IEC |
| Requested input power | [kW] | 0.09 |
| Service factor | | 1 |
| Rated Power P1 | [kW] | 0.01 |

Output data

Gear unit **M RS/RS 40/85 S (bolted) 11 4000 56 B5 AC 32 MT 0.09 kW 56 B4 B5 X3 B3**

| | | |
|---------------------|-------|-----------------------------|
| Type | | RS/RS - Worm speed reducers |
| Input type | | M |
| Size | | 40/85 |
| Ratio (i=) | | 4000 |
| Gearbox ratio | | 40.00 |
| Pre-stage ratio | | 100.00 |
| Input flange | | B5 |
| Mounting position | | B3 |
| Input speed | [rpm] | 1400 |
| Output speed | [rpm] | 0.35 |
| Rated output torque | [Nm] | 564.81 |
| Service Factor | | 1 |
| Efficiency | | 0.23 |

Gear unit configuration

| | | |
|---------------------|--|---------------------|
| Output shaft | | Hollow output shaft |
| Fixing | | Feet |
| Version | | S (bolted) |
| Attachment position | | 11 |

Output radial and axial loads

| | | |
|-----------------------------------|-----|------|
| Ball bearings output radial load | [N] | 8300 |
| Taper bearings output radial load | [N] | 9400 |
| Ball bearings output axial load | [N] | 1660 |
| Taper bearings output axial load | [N] | 1880 |

Accessories

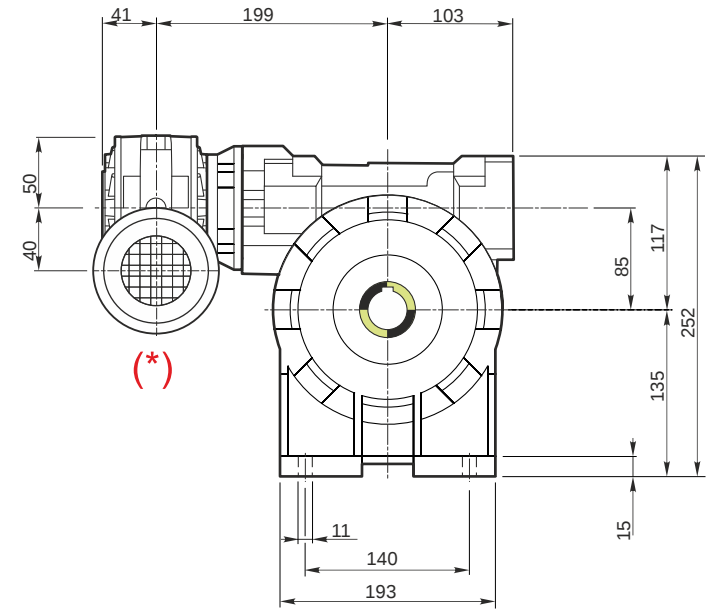
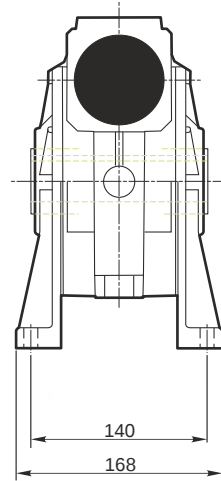
| | | |
|---------------------|--|-------|
| Hollow output shaft | | AC 32 |
|---------------------|--|-------|

Electric motor

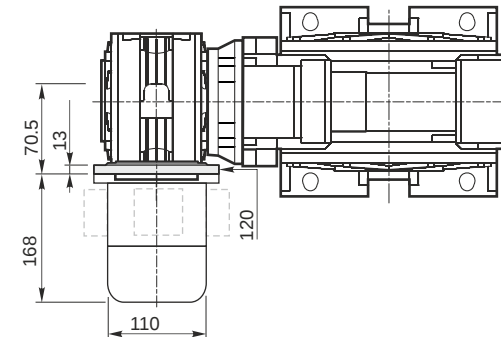
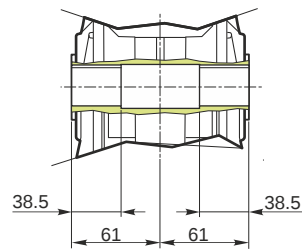
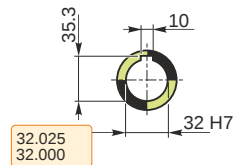
| | | |
|-------|------|-------|
| Size | | 56 B4 |
| Poles | | 4 |
| Power | [kW] | 0.09 |

Electric motor configuration

| | | |
|-----------------------|--|----|
| Motor flange | | B5 |
| Terminal box position | | X3 |

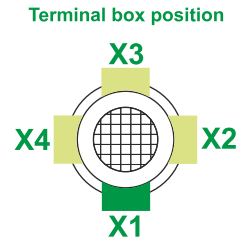
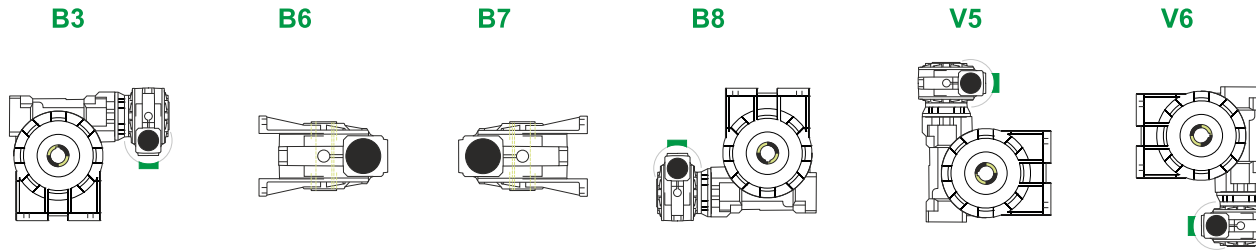


Hollow output shaft



M RS/RS 40/85 S (bolted) 11 4000 56 B5 AC 32 MT 0.09 kW 56 B4 B5 X3 B3

Mounting positions

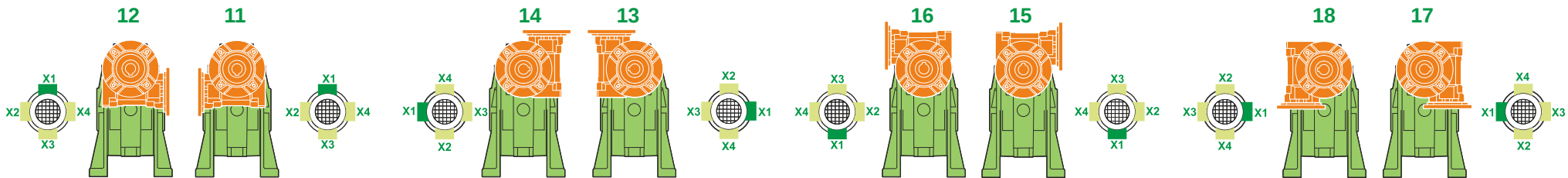


| | |
|------|---|
| 0.08 | 1 |
| 0.6 | 2 |

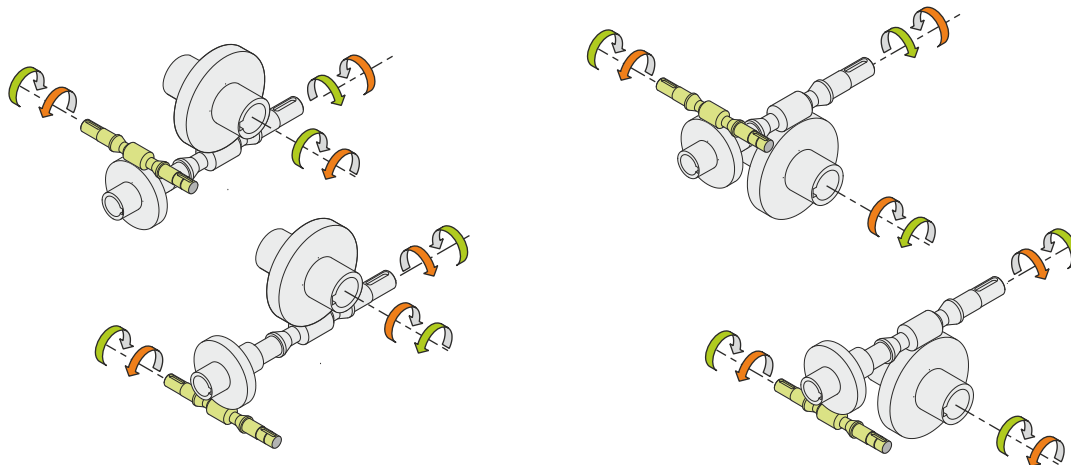


Lubricant type: Long life synthetic oil ISO VG320

Attachment position



Direction of rotation



Weight

| | |
|---------------------|------|
| Gear unit [kg] | 16.5 |
| Electric motor [kg] | 2.6 |

Gearing data 2

| | | |
|--|------------------|---------|
| | Axial module | 3.4 |
| | Number of starts | 1 |
| | Lead angle | 1 |
| | Pressure angle | 50° 52' |

Backdriving

- Static self-locking
- No back-driving
- No dynamic back-driving

M RS/RS 40/85 S (bolted) 11 4000 56 B5 AC 32 MT 0.09 kW 56 B4 B5 X3 B3