

Input data

System of measurement		Metric	
Input type		Gear motor	
Input speed	[rpm]	1400	
Output speed	[rpm]	0.14	
Ratio (i=)		10000	
Frequency	[Hz]	50	
Input options		IEC	
Requested input power	[kW]	0.13	
Service factor		0.4	Warning! The torque generated by the selected motor is above the gearbox rated output torque; please refer to the gearbox rated output torque.
Rated Power P1	[kW]	0.05	

Output data

Gear unit	M RS/RS 50/110 S (bolted) 11 10000 63 B5 AC 42 MT 0.13 kW 63 A4 B5 X3 B3
------------------	---

Type		RS/RS - Worm speed reducers
Input type		M
Size		50/110
Ratio (i=)		10000
Gearbox ratio		100.00
Pre-stage ratio		100.00
Input flange		B5
Mounting position		B3
Input speed	[rpm]	1400
Output speed	[rpm]	0.14
Rated output torque	[Nm]	560
Service Factor		0.4
Efficiency		0.16

Gear unit configuration

Output shaft		Hollow output shaft
Fixing		Feet
Version		S (bolted)
Attachment position		11

Output radial and axial loads

Ball bearings output radial load	[N]	9800
Taper bearings output radial load	[N]	11100
Ball bearings output axial load	[N]	1960
Taper bearings output axial load	[N]	2220

Accessories

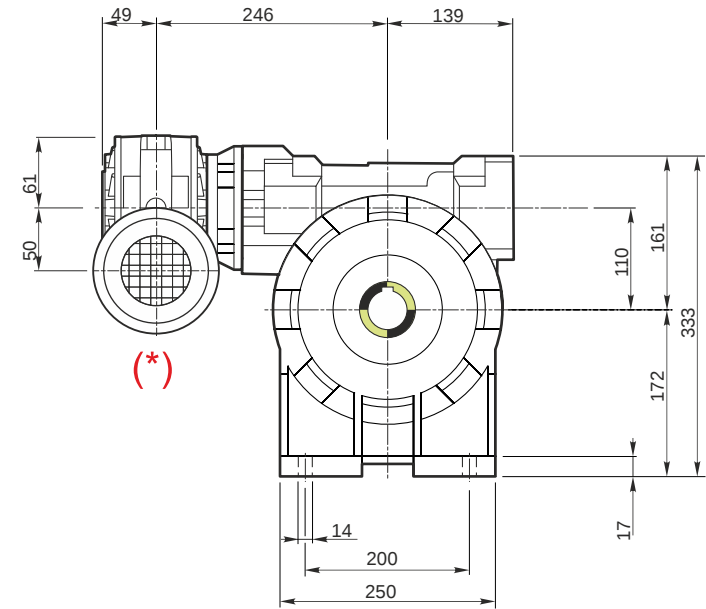
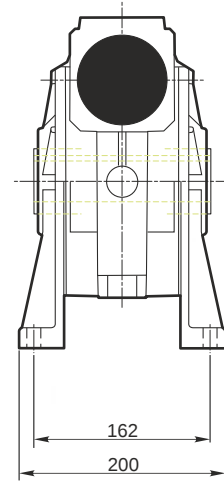
Hollow output shaft		AC 42
---------------------	--	-------

Electric motor

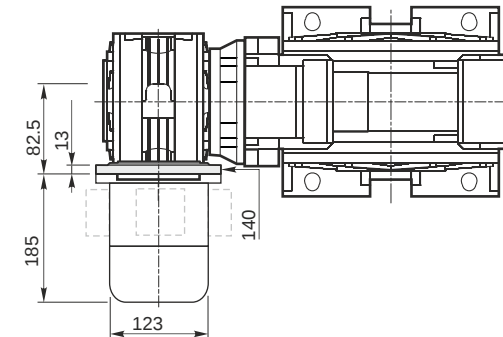
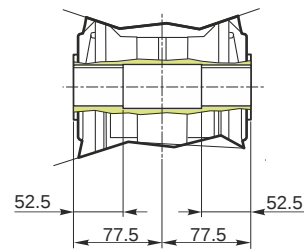
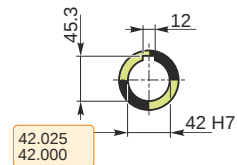
Size		63 A4
Poles		4
Power	[kW]	0.13

Electric motor configuration

Motor flange		B5
Terminal box position		X3

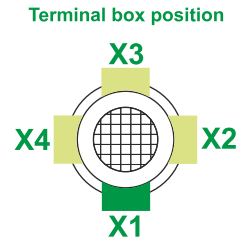
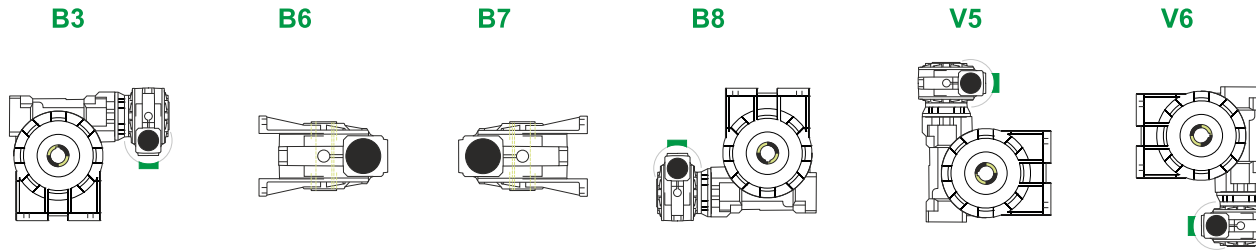


Hollow output shaft



M RS/RS 50/110 S (bolted) 11 10000 63 B5 AC 42 MT 0.13 kW 63 A4 B5 X3 B3

Mounting positions

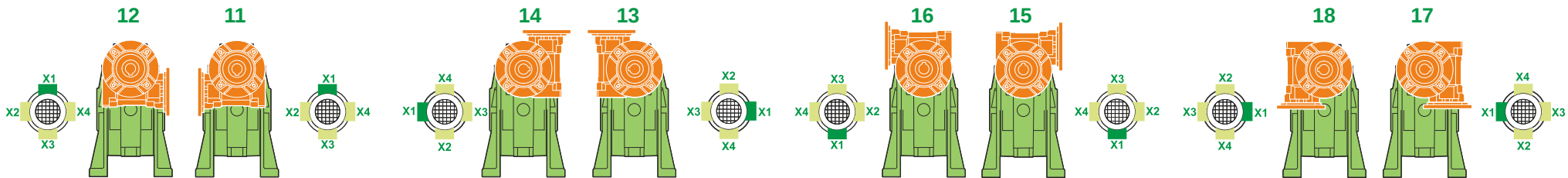


0.13	1
1.5	2

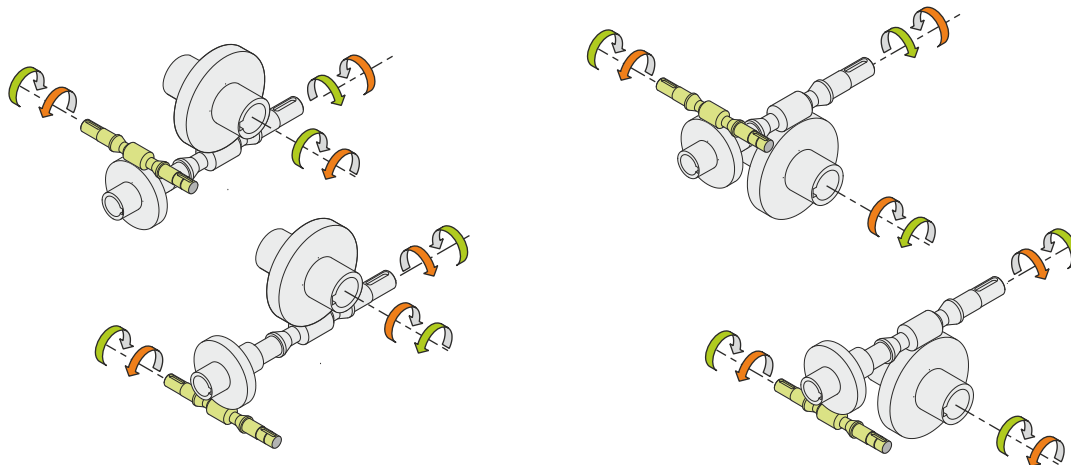


Lubricant type: Long life synthetic oil ISO VG320

Attachment position



Direction of rotation



Weight

Gear unit [kg]	45
Electric motor [kg]	4.3

Gearing data 2

2	Axial module	1.8
	Number of starts	1
	Lead angle	1
	Pressure angle	20°34'

Backdriving

- Static self-locking
- No back-driving
- No dynamic back-driving

M RS/RS 50/110 S (bolted) 11 10000 63 B5 AC 42 MT 0.13 kW 63 A4 B5 X3 B3