

Input data

System of measurement		Metric
Input type		Gear motor
Input speed	[rpm]	1400
Output speed	[rpm]	8.09
Ratio (i=)		173.04
Frequency	[Hz]	50
Input options		IEC
Requested input power	[kW]	0.09
Service factor		1.3
Rated Power P1	[kW]	0.12

Output data

Gear unit	M TA 63/40 B3 10 173.04 56 B14 AC 19 MT 0.09 kW 56 B4 B14 X3
------------------	---

Type		TA - Worm speed reducers
Input type		M
Size		63/40
Ratio (i=)		173.04
Gearbox ratio		28.00
Pre-stage ratio		6.18
Input flange		B14
Input speed	[rpm]	1400
Output speed	[rpm]	8.09
Rated output torque	[Nm]	62.68
Service Factor		1.3
Efficiency		0.59
Inertia moment	[kgm ²]	0.000022

Gear unit configuration

Output shaft		Hollow output shaft
Fixing		Universal
Version		B3
Attachment position		10

Output radial and axial loads

Ball bearings output radial load	[N]	2300
Taper bearings output radial load	[N]	2600
Ball bearings output axial load	[N]	460
Taper bearings output axial load	[N]	520

Accessories

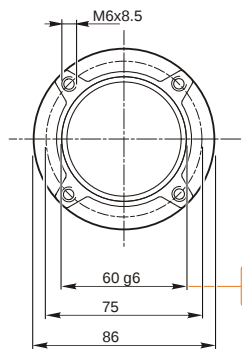
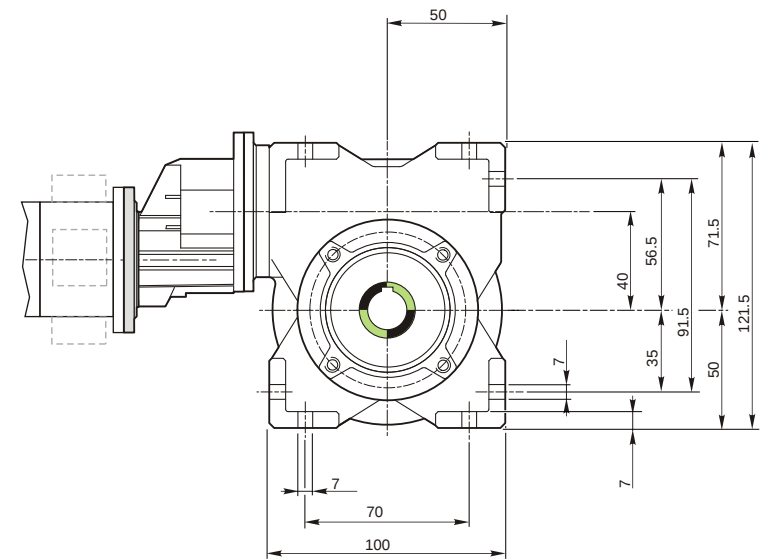
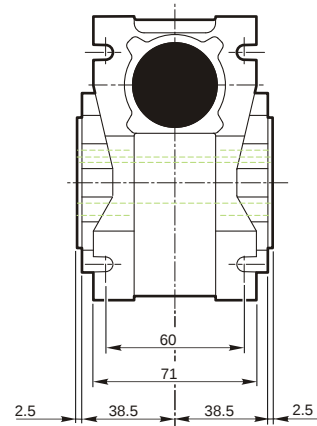
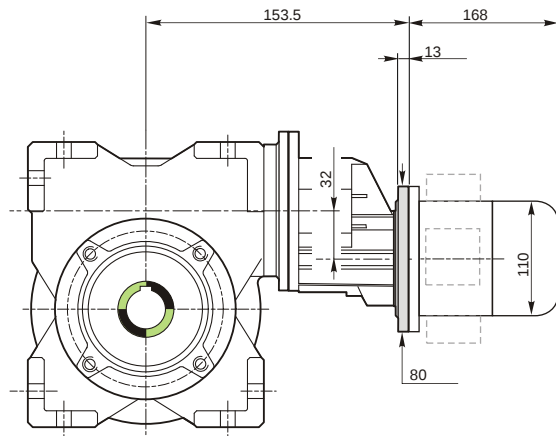
Hollow output shaft		AC 19
---------------------	--	-------

Electric motor

Size		56 B4
Poles		4
Power	[kW]	0.09

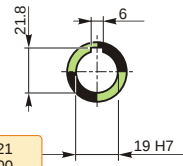
Electric motor configuration

Motor flange		B14
Terminal box position		X3

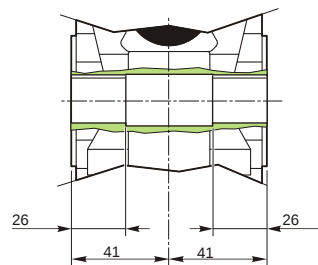


59.99
59.971

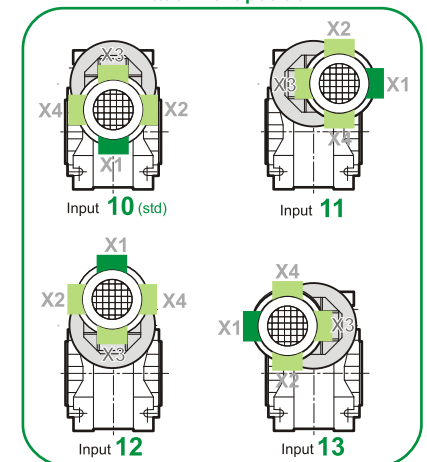
Hollow output shaft



19.021
19.000



Attachment position



M TA 63/40 B3 10 173.04 56 B14 AC 19 MT 0.09 kW 56 B4 B14 X3

Mounting positions

B3

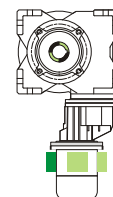
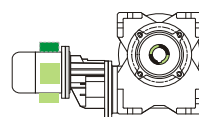
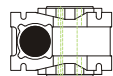
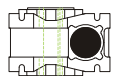
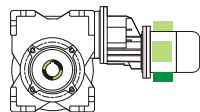
B6

B7

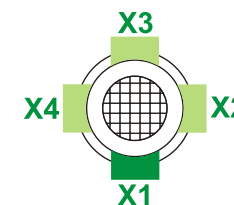
B8

V5

V6



Terminal box position



0.04

1



0.08

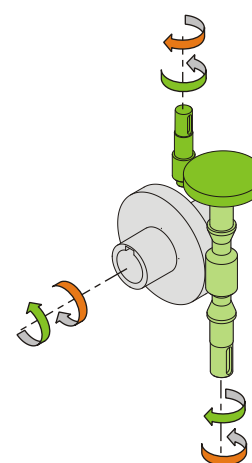
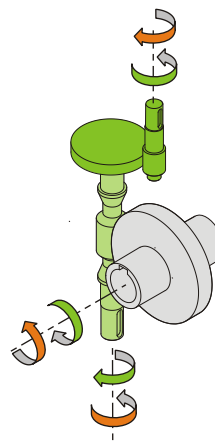
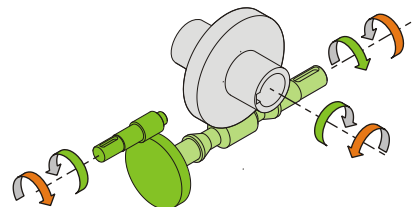
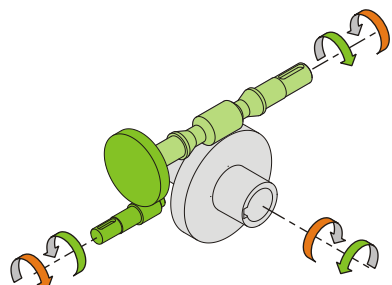
2



← Oil quantity [litres]

Lubricant type: Long life synthetic oil ISO VG320

Direction of rotation



Weight

Gear unit [kg]	4
Electric motor [kg]	2.6

Gearing data

Axial module	2.1
Number of starts	1
Lead angle	5° 39'
Pressure angle	20°

Backdriving

Static self-locking
Slow back-driving in case of vibrations
Low dynamic back-driving

M TA 63/40 B3 10 173.04 56 B14 AC 19 MT 0.09 kW 56 B4 B14 X3