

Input data

System of measurement		Metric
Input type		Gear motor
Input speed	[rpm]	1400
Output speed	[rpm]	5.66
Ratio (i=)		247.2
Frequency	[Hz]	50
Input options		IEC
Requested input power	[kW]	0.09
Service factor		0.9
Rated Power P1	[kW]	0.08

Output data

Gear unit	M TA 63/40 B3 10 247.2 56 B14 AC 19 MT 0.09 kW 56 B4 B14 X3
------------------	--

Type		TA - Worm speed reducers
Input type		M
Size		63/40
Ratio (i=)		247.2
Gearbox ratio		40.00
Pre-stage ratio		6.18
Input flange		B14
Input speed	[rpm]	1400
Output speed	[rpm]	5.66
Rated output torque	[Nm]	78.92
Service Factor		0.9
Efficiency		0.52
Inertia moment	[kgm ²]	0.000022

Gear unit configuration

Output shaft		Hollow output shaft
Fixing		Universal
Version		B3
Attachment position		10

Output radial and axial loads

Ball bearings output radial load	[N]	2300
Taper bearings output radial load	[N]	2600
Ball bearings output axial load	[N]	460
Taper bearings output axial load	[N]	520

Accessories

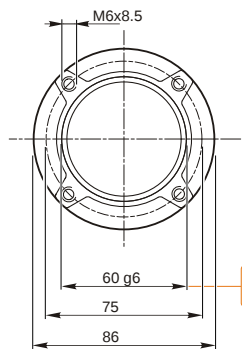
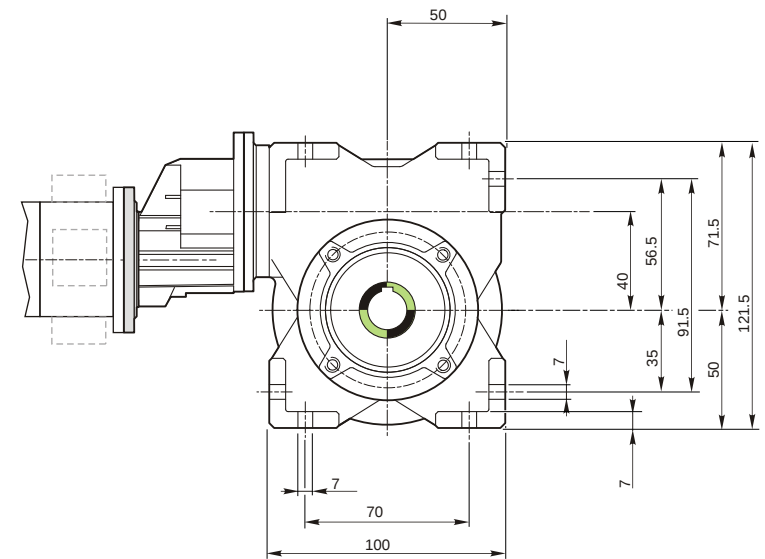
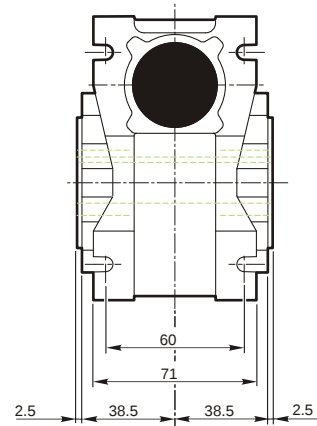
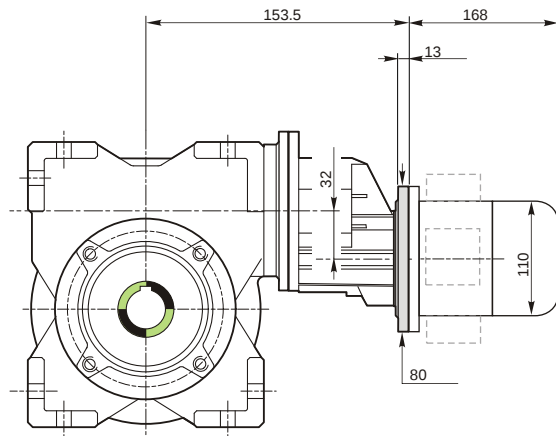
Hollow output shaft		AC 19
---------------------	--	-------

Electric motor

Size		56 B4
Poles		4
Power	[kW]	0.09

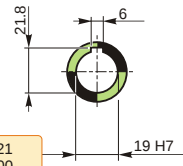
Electric motor configuration

Motor flange		B14
Terminal box position		X3

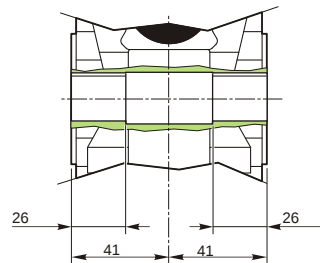


59.99
59.971

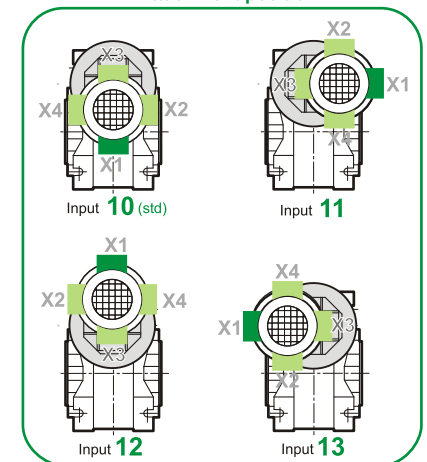
Hollow output shaft



19.021
19.000



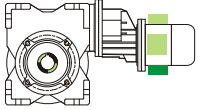
Attachment position



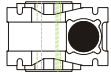
M TA 63/40 B3 10 247.2 56 B14 AC 19 MT 0.09 kW 56 B4 B14 X3

Mounting positions

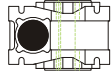
B3



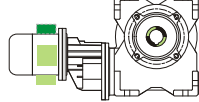
B6



B7



B8



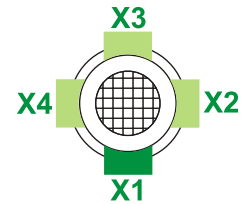
V5



V6



Terminal box position

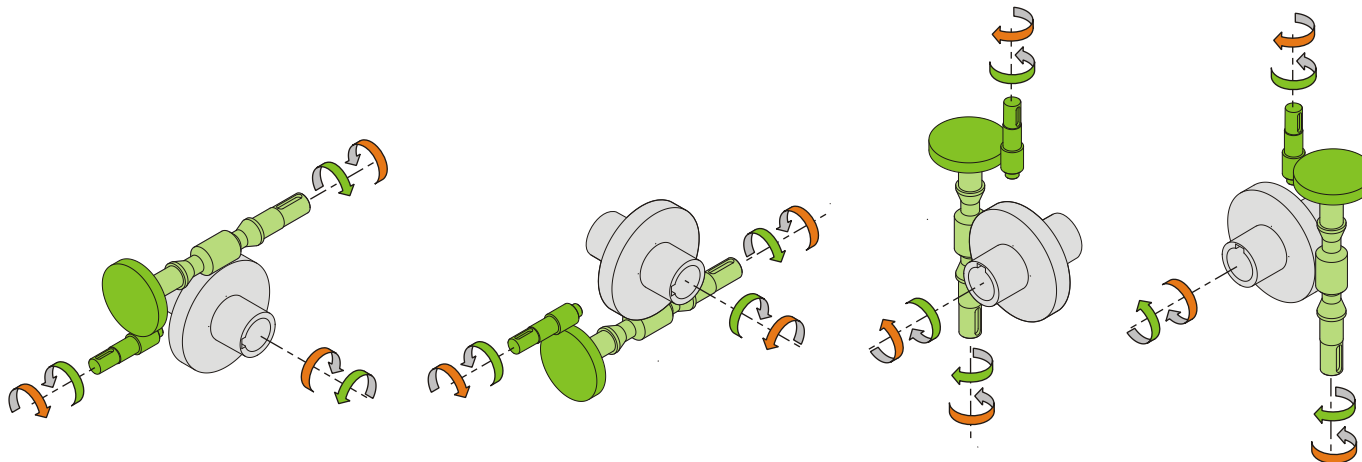


0.04	1	
0.08	2	

← Oil quantity [litres]

Lubricant type: Long life synthetic oil ISO VG320

Direction of rotation



Weight

Gear unit [kg]	4
Electric motor [kg]	2.6

Gearing data

Axial module	1.5
Number of starts	1
Lead angle	4° 17'
Pressure angle	20°

Backdriving

Static self-locking
Slow back-driving in case of vibrations
Low dynamic back-driving

M TA 63/40 B3 10 247.2 56 B14 AC 19 MT 0.09 kW 56 B4 B14 X3