

### Input data

System of measurement		Metric
Input type		Gear motor
Input speed	[rpm]	1400
Output speed	[rpm]	8.09
Ratio (i=)		173.04
Frequency	[Hz]	50
Input options		IEC
Requested input power	[kW]	0.18
Service factor		1.2
Rated Power P1	[kW]	0.21

### Output data

<b>Gear unit</b>	<b>M TA 63/50 B3 10 173.04 63 B14 AC 24 MT 0.18 kW 63 B4 B14 X3</b>
------------------	---

Type		TA - Worm speed reducers
Input type		M
Size		63/50
Ratio (i=)		173.04
Gearbox ratio		28.00
Pre-stage ratio		6.18
Input flange		B14
Input speed	[rpm]	1400
Output speed	[rpm]	8.09
Rated output torque	[Nm]	116.86
Service Factor		1.2
Efficiency		0.55
Inertia moment	[kgm <sup>2</sup> ]	0.000023

#### Gear unit configuration

Output shaft		Hollow output shaft
Fixing		Universal
Version		B3
Attachment position		10

#### Output radial and axial loads

Ball bearings output radial load	[N]	3200
Taper bearings output radial load	[N]	4200
Ball bearings output axial load	[N]	640
Taper bearings output axial load	[N]	840

#### Accessories

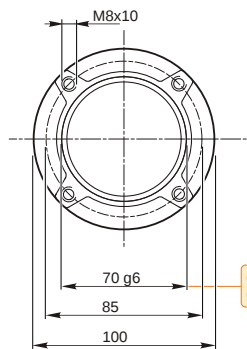
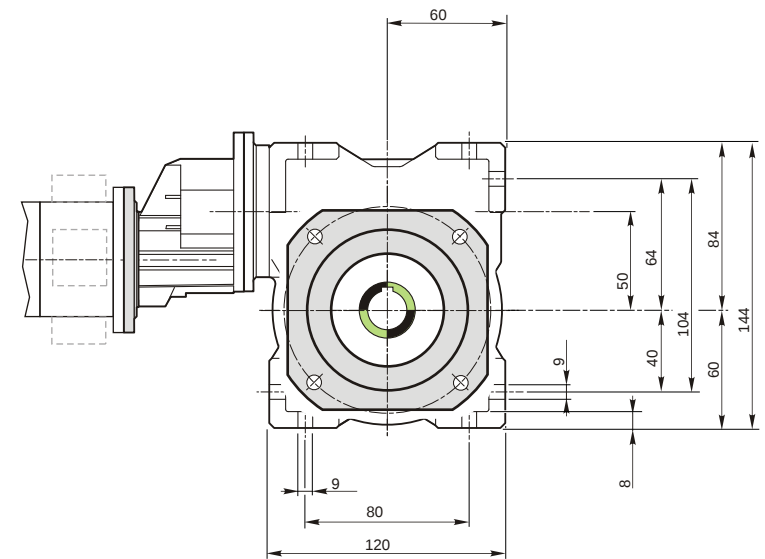
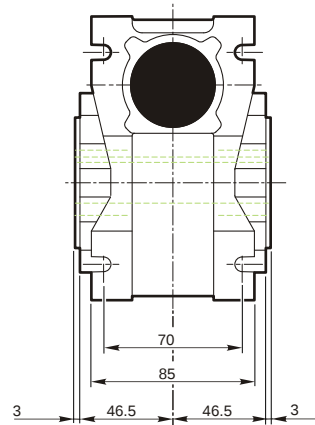
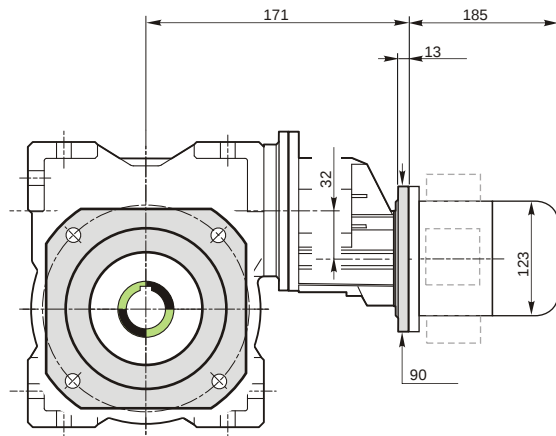
Hollow output shaft		AC 24
---------------------	--	-------

#### Electric motor

Size		63 B4
Poles		4
Power	[kW]	0.18

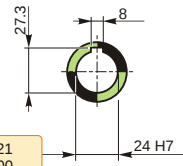
#### Electric motor configuration

Motor flange		B14
Terminal box position		X3

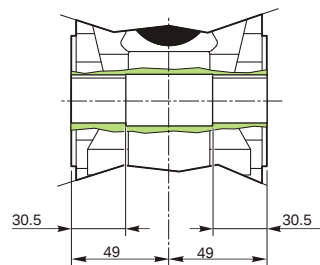


69.99  
69.971

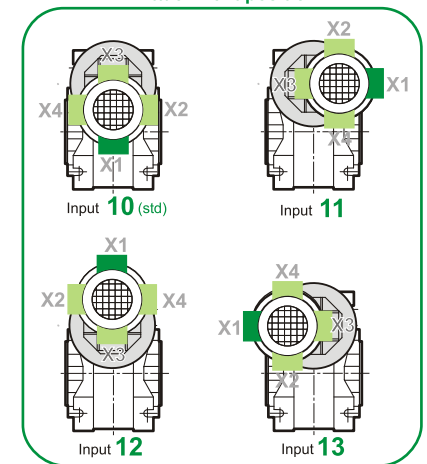
Hollow output shaft



24.021  
24.000



Attachment position



**M TA 63/50 B3 10 173.04 63 B14 AC 24 MT 0.18 kW 63 B4 B14 X3**

**Mounting positions**

**B3**

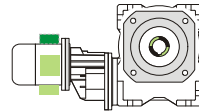
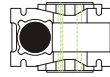
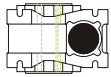
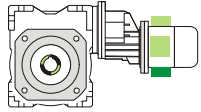
**B6**

**B7**

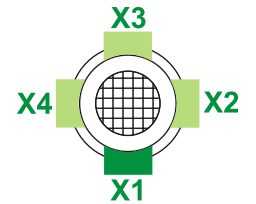
**B8**

**V5**

**V6**



Terminal box position



0.04

1



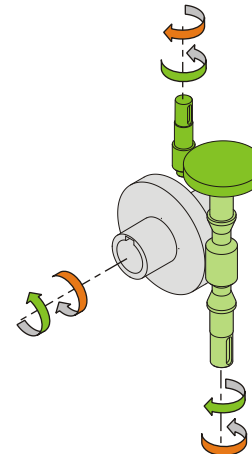
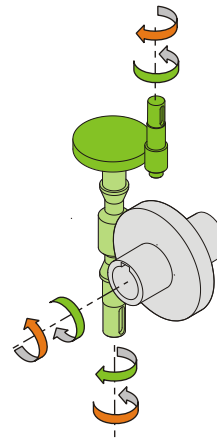
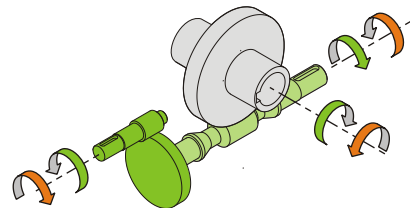
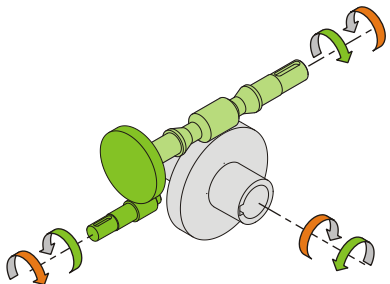
0.13

2

← Oil quantity [litres]

Lubricant type: Long life synthetic oil ISO VG320

**Direction of rotation**



**Weight**

Gear unit [kg]	5.3
Electric motor [kg]	4.3

**Gearing data**

Axial module	2.7
Number of starts	1
Lead angle	6° 19'
Pressure angle	20°

**Backdriving**

Static self-locking  
Slow back-driving in case of vibrations  
Low dynamic back-driving

**M TA 63/50 B3 10 173.04 63 B14 AC 24 MT 0.18 kW 63 B4 B14 X3**