

Input data

System of measurement		Metric
Input type		Gear motor
Input speed	[rpm]	1400
Output speed	[rpm]	3.97
Ratio (i=)		353
Frequency	[Hz]	50
Input options		IEC
Requested input power	[kW]	0.06
Service factor		1
Rated Power P1	[kW]	0.06

Output data

Gear unit **M TA 63/50 B3 10 353 56 B14 AC 24 MT 0.06 kW 56 A4 B14 X3**

Type		TA - Worm speed reducers
Input type		M
Size		63/50
Ratio (i=)		353
Gearbox ratio		100.00
Pre-stage ratio		3.53
Input flange		B14
Input speed	[rpm]	1400
Output speed	[rpm]	3.97
Rated output torque	[Nm]	50.57
Service Factor		1
Efficiency		0.35
Inertia moment	[kgm ²]	0.000036

Gear unit configuration

Output shaft		Hollow output shaft
Fixing		Universal
Version		B3
Attachment position		10

Output radial and axial loads

Ball bearings output radial load	[N]	3200
Taper bearings output radial load	[N]	4200
Ball bearings output axial load	[N]	640
Taper bearings output axial load	[N]	840

Accessories

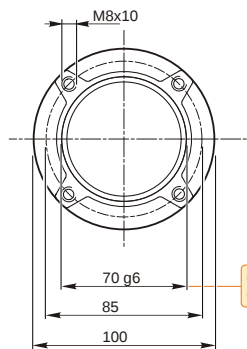
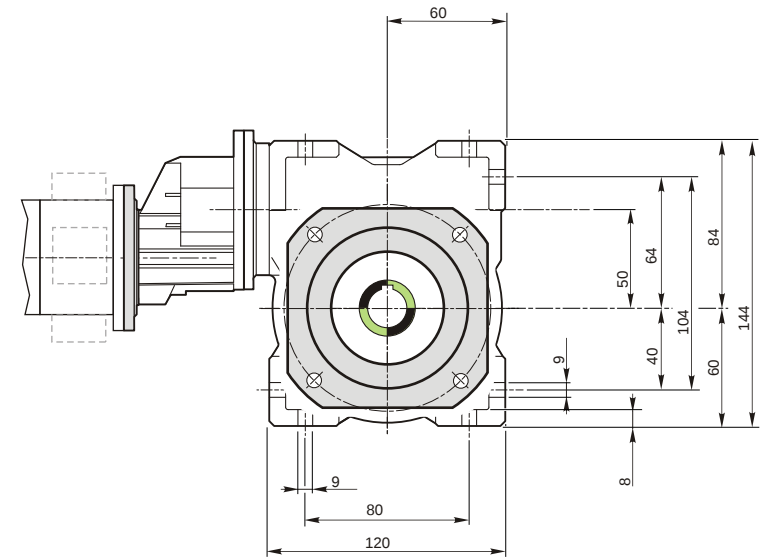
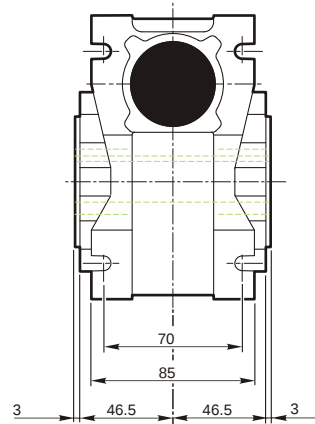
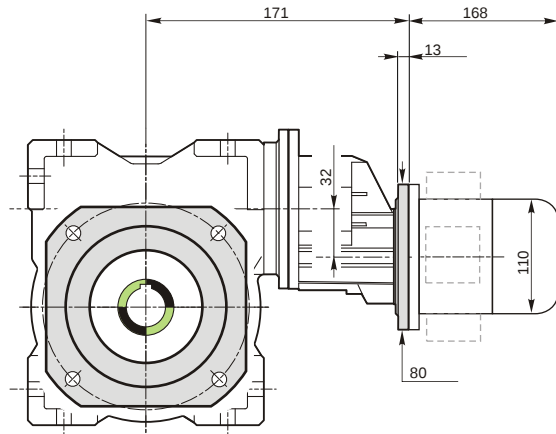
Hollow output shaft		AC 24
---------------------	--	-------

Electric motor

Size		56 A4
Poles		4
Power	[kW]	0.06

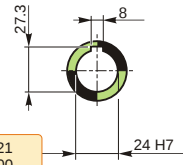
Electric motor configuration

Motor flange		B14
Terminal box position		X3

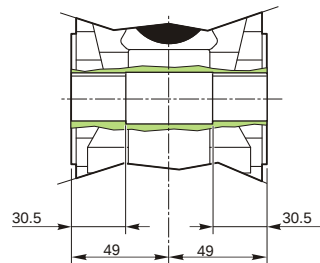


69.99
69.971

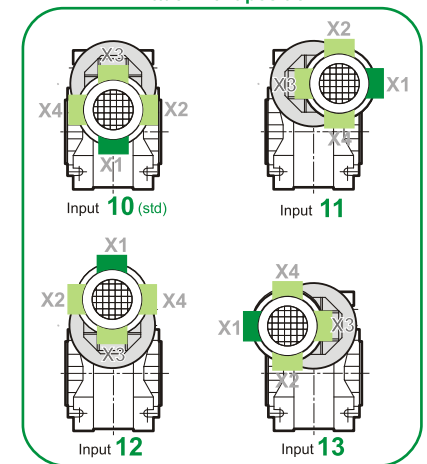
Hollow output shaft



24.021
24.000



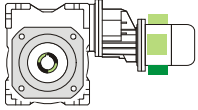
Attachment position



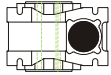
M TA 63/50 B3 10 353 56 B14 AC 24 MT 0.06 kW 56 A4 B14 X3

Mounting positions

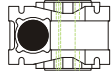
B3



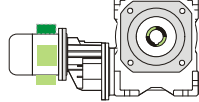
B6



B7



B8



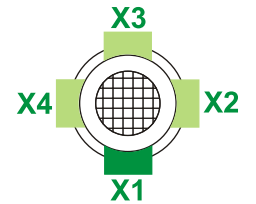
V5



V6



Terminal box position



0.04

1



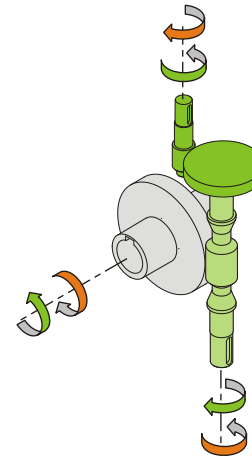
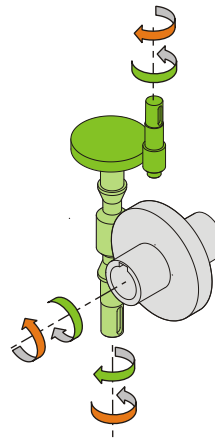
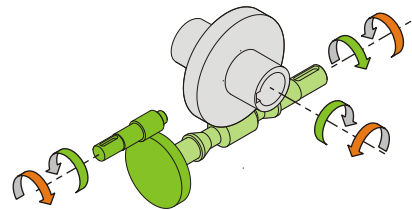
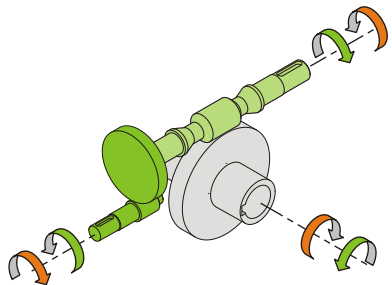
0.13

2

← Oil quantity [litres]

Lubricant type: Long life synthetic oil ISO VG320

Direction of rotation



Weight

Gear unit [kg]	5.3
Electric motor [kg]	2.6

Gearing data

Axial module	0.8
Number of starts	1
Lead angle	2° 17'
Pressure angle	20°

Backdriving

Static self-locking
No back-driving
Low dynamic back-driving

M TA 63/50 B3 10 353 56 B14 AC 24 MT 0.06 kW 56 A4 B14 X3