

Input data

System of measurement		Metric
Input type		Gear motor
Input speed	[rpm]	1400
Output speed	[rpm]	31.25
Ratio (i=)		44.8
Frequency	[Hz]	50
Input options		IEC
Requested input power	[kW]	0.75
Service factor		1.2
Rated Power P1	[kW]	0.9

Output data

Gear unit **M TA 80/60 B3 10 44.8 80 B14 AC 25 MT 0.75 kW 80 B4 B14 X3**

Type		TA - Worm speed reducers
Input type		M
Size		80/60
Ratio (i=)		44.8
Gearbox ratio		7.00
Pre-stage ratio		6.40
Input flange		B14
Input speed	[rpm]	1400
Output speed	[rpm]	31.25
Rated output torque	[Nm]	181.07
Service Factor		1.2
Efficiency		0.79
Inertia moment	[kgm ²]	0.000259

Gear unit configuration

Output shaft		Hollow output shaft
Fixing		Universal
Version		B3
Attachment position		10

Output radial and axial loads

Ball bearings output radial load	[N]	4100
Taper bearings output radial load	[N]	5450
Ball bearings output axial load	[N]	820
Taper bearings output axial load	[N]	1090

Accessories

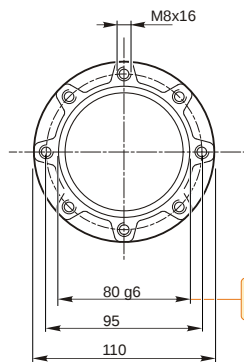
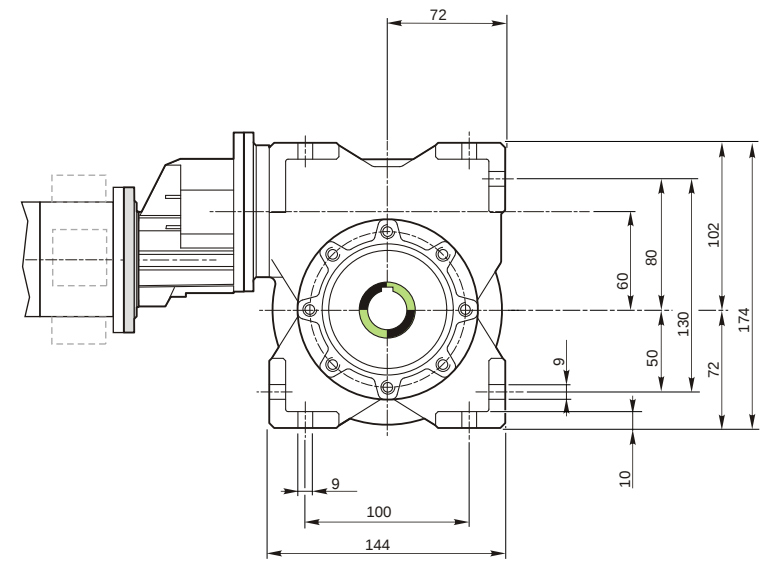
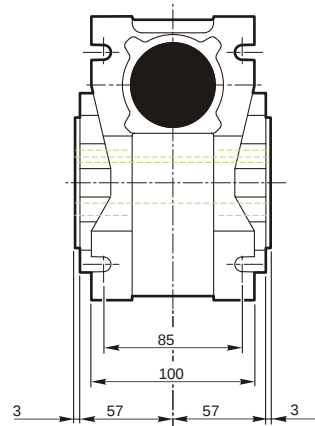
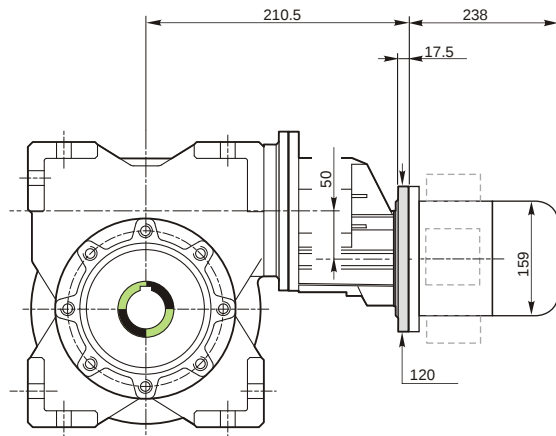
Hollow output shaft		AC 25
---------------------	--	-------

Electric motor

Size		80 B4
Poles		4
Power	[kW]	0.75

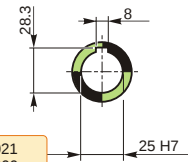
Electric motor configuration

Motor flange		B14
Terminal box position		X3

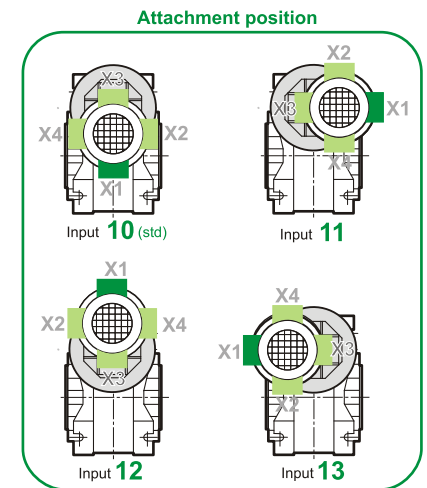
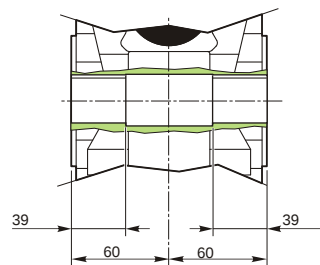


79.99
79.971

Hollow output shaft



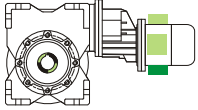
25.021
25.000



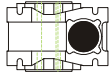
M TA 80/60 B3 10 44.8 80 B14 AC 25 MT 0.75 kW 80 B4 B14 X3

Mounting positions

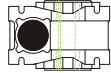
B3



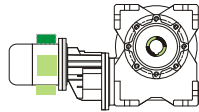
B6



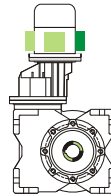
B7



B8



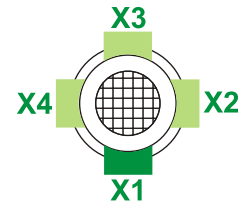
V5



V6



Terminal box position

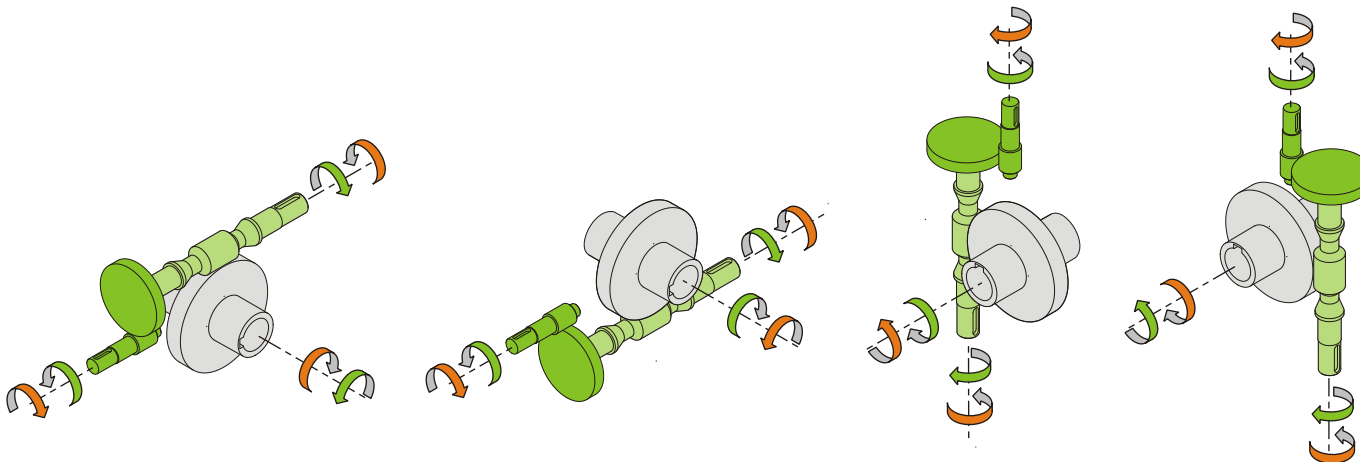


0.1	1	
0.23	2	

← Oil quantity [litres]

Lubricant type: Long life synthetic oil ISO VG320

Direction of rotation



Weight

Gear unit [kg]	10.5
Electric motor [kg]	9.8

Gearing data

Axial module	3.3
Number of starts	4
Lead angle	25° 33'
Pressure angle	20°

Backdriving

- Static back-driving
- Quick back-driving
- Dynamic back-driving

M TA 80/60 B3 10 44.8 80 B14 AC 25 MT 0.75 kW 80 B4 B14 X3